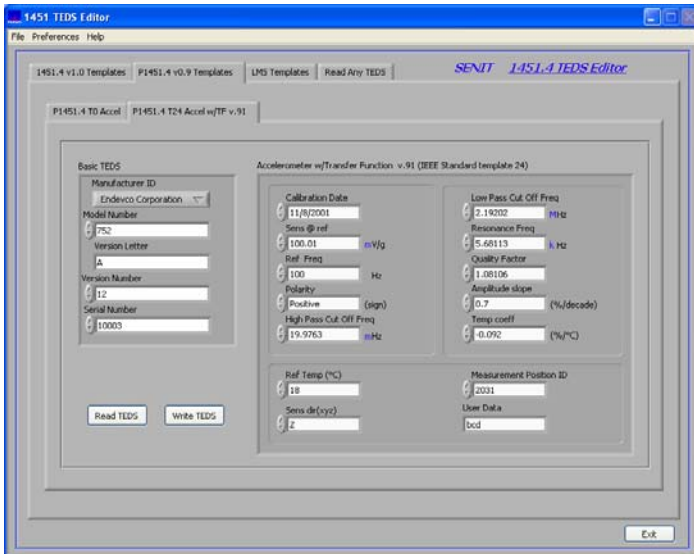


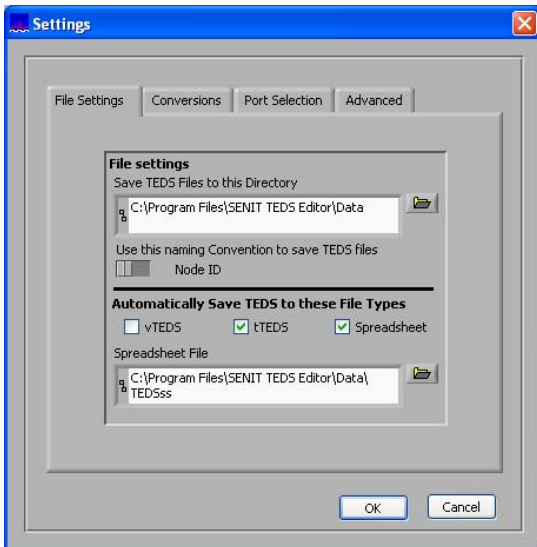
Read Any TEDS

This is usually the default screen for reading any TEDS transducer. It provides a complete listing of all data stored in TEDS memory.



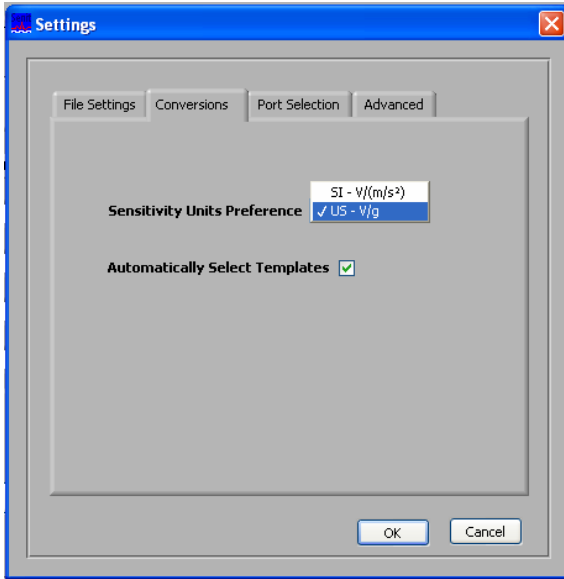
Template Screens

Selecting a template tab will display the layout for entering data in accordance with a specific TEDS template.



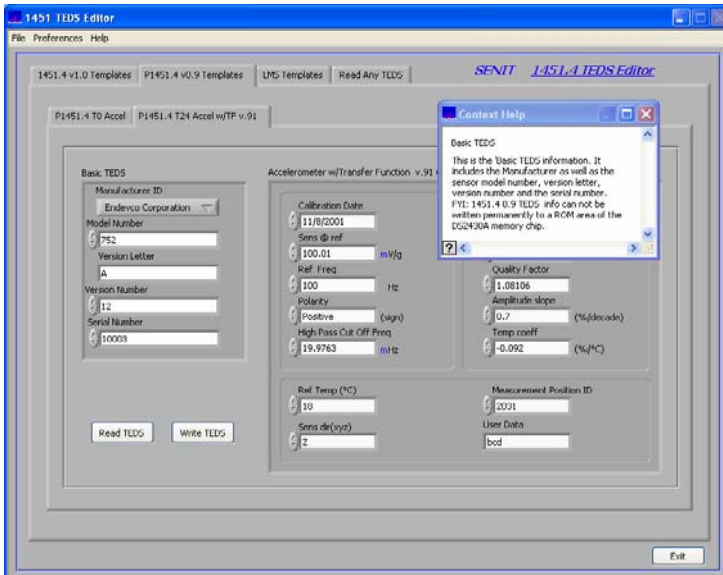
Preferences – Saving Data Files

The File Settings screen allows the user to set the file naming convention as well as the data file formats (e.g. spreadsheet, text TEDS file, and virtual TEDS file) for TEDS data that is saved.



Preferences – Units

A global setting is available for selecting either SI or English (US) units.



Help

A complete help menu is available as well as context help screens that provide guidance for each field in the template.